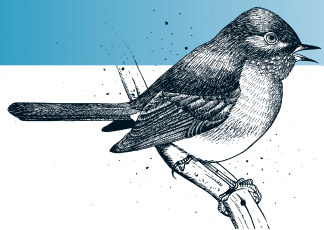


Sylvia undata

DARTFORD WARBLER



SPEC 2 (1994: 2) **Status** (Depleted)

Criteria Large historical decline

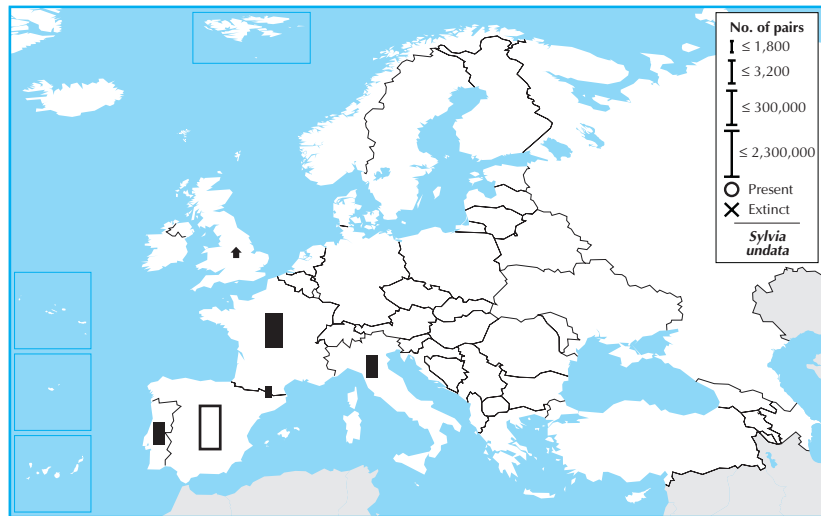
European IUCN Red List Category —

Criteria —

Global IUCN Red List Category —

Criteria —

Sylvia undata is a patchily distributed resident across parts of south-western Europe, which constitutes >95% of its global range. Its European breeding population is very large (>1,900,000 pairs), but underwent a large decline between 1970–1990. Although the trend of the stronghold population in Spain during 1990–2000 was unknown, the species was stable or increased elsewhere in its European range. Nevertheless, its total population size has probably not recovered to the level that preceded its decline, and consequently the species is provisionally evaluated as Depleted.



Country	Breeding pop. size (pairs)	Year(s)	Trend	Mag. %	References
Andorra	20 – 30	99–01	(0)	(0–19)	1,3
France	(150,000 – 600,000)	98–02	(F)	(20–49)	4
Italy	(10,000 – 30,000)	03	(0)	(0–19)	
Portugal	(10,000 – 100,000)	02	(0)	(0–19)	
Spain	(1,700,000 – 3,000,000)	92	?	–	13,12,10
UK	1,600 – 1,900	94	+	187	
Total (approx.)	1,900,000 – 3,700,000			Overall trend Unknown	
Breeding range	>1,000,000 km²			Gen. length. <3.3 %	% Global pop. >95

2000 population

100

1990 population

99

Data quality (%) – *Sylvia undata*

□ unknown □ poor □ medium ■ good

1990–2000 trend

87

13

1970–1990 trend

14

86