

# *Sitta neumayer*

## WESTERN ROCK-NUTHATCH

Non-SPEC<sup>E</sup> (1994: 4) Status (Secure)

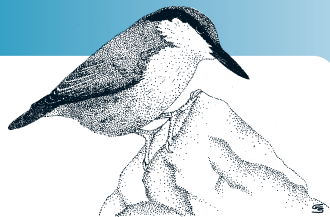
Criteria —

European IUCN Red List Category —

Criteria —

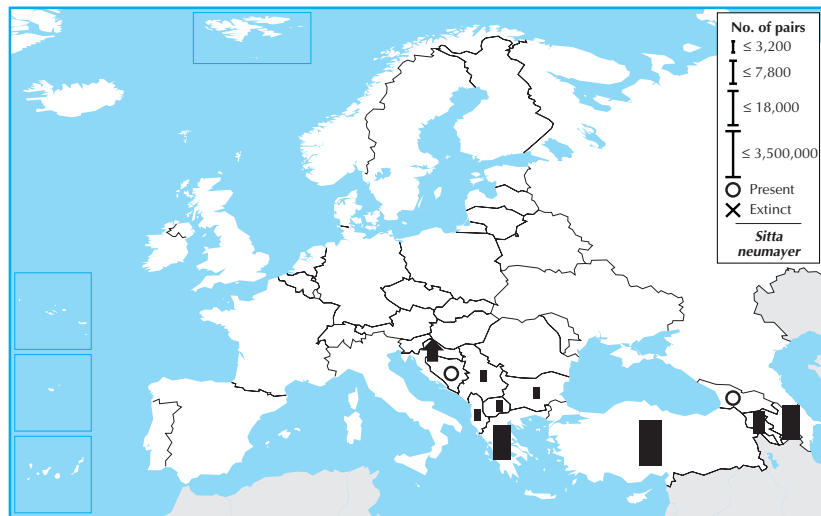
Global IUCN Red List Category —

Criteria —



*Sitta neumayer* is distributed patchily across much of south-eastern Europe, which constitutes >75% of its global range. Its European breeding population is very large (>2,000,000 pairs), and was stable between 1970–1990. The stronghold population in Turkey was probably stable during 1990–2000, and populations were also stable (or increased) across the rest of its European range. Consequently, it is provisionally evaluated as Secure.

Country	Breeding pop. size (pairs)	Year(s)	Trend	Mag.%	References
Albania	(2,000 – 5,000)	02	(0)	(0–19)	
Armenia	6,000 – 10,000	98–00	0	0–19	
Azerbaijan	(10,000 – 30,000)	96–00	(0)	(0–19)	
Bosnia & HG	Present	85–89	?	–	
Bulgaria	200 – 500	96–02	0	0–9	
Croatia	(5,000 – 10,000)	02 (+)	(+)	(50–79)	16
Georgia	Present	03	?	–	
Greece	(10,000 – 30,000)	95–00	(0)	(0–19)	
Macedonia	500 – 2,000	90–00	(0)	(0–19)	
Serbia & MN	400 – 600	97–02	0	0–19	1,50,225,227, 156,216,91
Turkey	(2,000,000 – 6,000,000)	01	(0)	(0–19)	
<b>Total (approx.)</b>	<b>2,000,000 – 6,100,000</b>	<b>Overall trend Stable</b>			
<b>Breeding range</b>	<b>&gt;1,000,000 km<sup>2</sup></b>	<b>Gen. length. &lt;3.3 % Global pop. 75–94</b>			



2000 population

100

1990 population

88

10

Data quality (%) – *Sitta neumayer*

□ unknown □ poor □ medium ■ good

1990–2000 trend

100

1970–1990 trend

91

9