

Somateria spectabilis

KING EIDER

Non-SPEC (1994: —) **Status** (Secure)

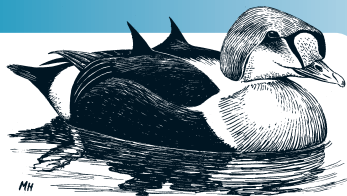
Criteria —

European IUCN Red List Category —

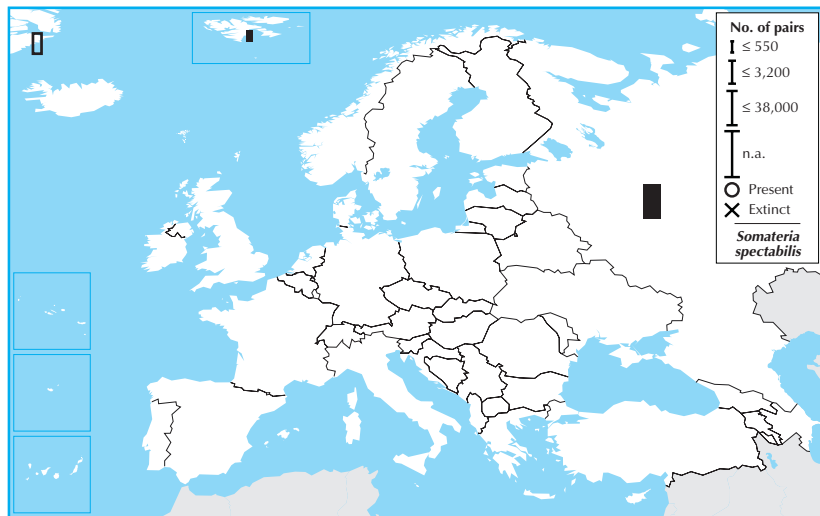
Criteria —

Global IUCN Red List Category —

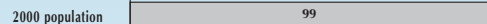
Criteria —



Somateria spectabilis breeds in Russia, Svalbard and Greenland, which together account for a tiny proportion of its global breeding range. Its European breeding population is relatively small (<46,000 pairs), but was stable between 1970–1990. Although the trend of the Greenland population during 1990–2000 was unknown, the species was stable in Russia and Svalbard, and probably remained stable overall. Consequently, it is provisionally evaluated as Secure.

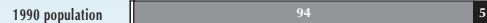
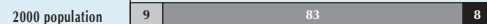
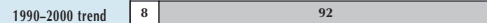


Country	Breeding pop. size (pairs)	Year(s)	Trend	Mag.%	References
Denmark					
Greenland	(2,000 – 5,000)	90–00	?	–	
Norway					
Svalbard	300 – 1,000	95	(0)	(0–19)	
Russia	(35,000 – 40,000)	90–00	(0)	(0–19)	85
Total (approx.)	37,000 – 46,000				
Breeding range	>500,000 km²				
		Overall trend Stable			
		Gen. length 5		% Global pop. <5	
Country	Winter pop. size (individuals)	Year(s)	Trend	Mag.%	References
Denmark					
Greenland	300,000 – 500,000	90–00	(–)	(0–19)	20
Estonia	0 – 1	98	?	–	1
Iceland	10 – 50	90–99	(F)	(–)	65,66,69,70,71,72,73,74,58,59
Norway	50,000 – 100,000	93–96	(0)	(0–19)	68,70
Russia	304 – 304	97	?	–	179
Total (approx.)	>350,000				
% in European IBAs	>40				
		Overall trend Small decline			
		Gen. length 5		% Global pop. 5–24	



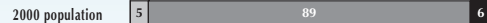
Data quality (%) – *Somateria spectabilis*

□ unknown □ poor □ medium ■ good



Data quality (%) – *Aythya ferina* (see p. 62, top)

□ unknown □ poor □ medium ■ good



Data quality (%) – *Aythya fuligula* (see p. 63, top)

□ unknown □ poor □ medium ■ good

