

Bulweria bulwerii

BULWER'S PETREL

SPEC 3 (1994: 3) **Status** (Rare)

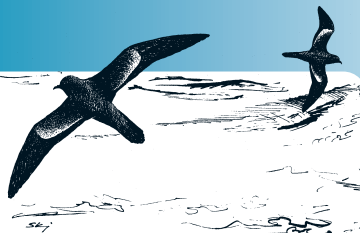
Criteria <10,000 pairs

European IUCN Red List Category —

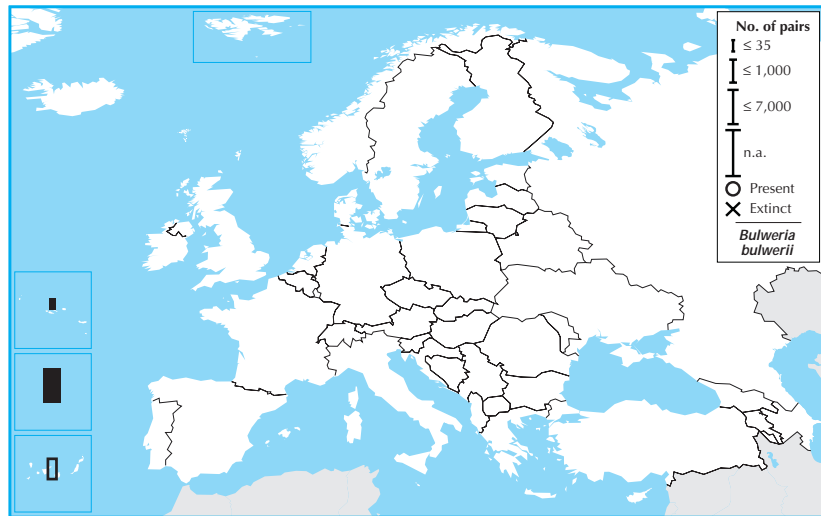
Criteria —

Global IUCN Red List Category —

Criteria —

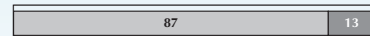


Bulweria bulwerii breeds in the Azores, Madeira and the Canary Islands, which together account for less than a quarter of its global breeding range. Its European breeding population is small (as few as 7,000 pairs), and underwent a moderate decline between 1970–1990. Although the trend in the Canary Islands during 1990–2000 was unknown, the species remained stable in its stronghold in Madeira, and was stable overall. Nevertheless, its population size renders it susceptible to the risks affecting small populations, and consequently it is provisionally evaluated as Rare.



Country	Breeding pop. size (pairs)	Year(s)	Trend	Mag. %	References
Portugal					
Azores	30 – 42	00–03	0	0–19	
Madeira	(6,000 – 8,000)	94	(0)	(0–19)	
Spain					
Canary Is.	1,000 – 1,000	87	?	–	23,28
Total (approx.)	7,000 – 9,000				Overall trend Stable
Breeding range	>20,000 km ²				Gen. length 24 % Global pop. 5–24

2000 population



1990 population



Data quality (%) – *Bulweria bulwerii*

□ unknown ◻ poor ◻ medium ◼ good

1990–2000 trend



1970–1990 trend

