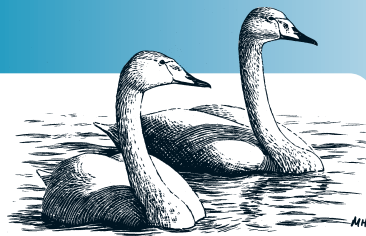


Cygnus cygnus

WHOOPEE SWAN



Non-SPEC^{FW} (1994: 4W) Status Secure

Criteria —

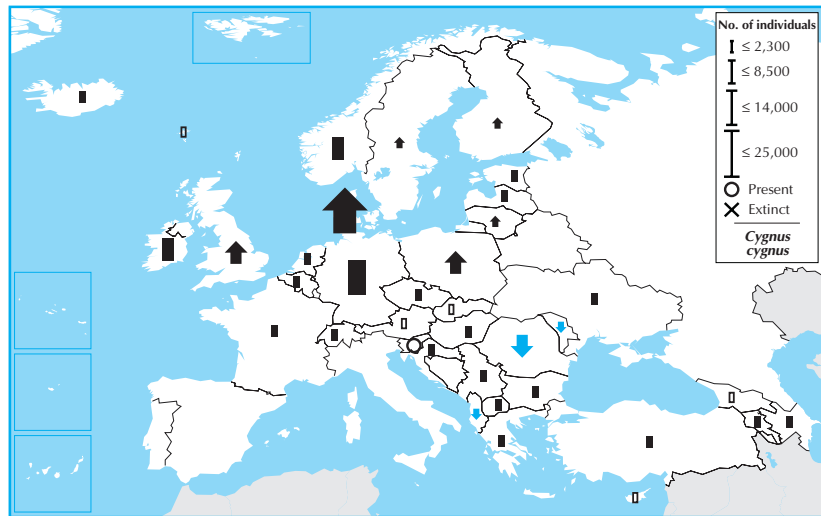
European IUCN Red List Category —

Criteria —

Global IUCN Red List Category —

Criteria —

Cygnus cygnus breeds mainly in Iceland, Fennoscandia and northern Russia, but winters patchily across much of Europe, which constitutes >50% of its global wintering range. Its European wintering population is relatively large (>65,000 individuals), and was stable between 1970–1990. Although there were declines in a handful of countries during 1990–2000, most European wintering populations—including key ones in Denmark and Germany—were broadly stable or increased, and the species underwent a large increase overall. Consequently, it is evaluated as Secure.



Country	Winter pop. size (individuals)	Year(s)	Trend	Mag.%	References
Azerbaijan	200 – 600	96–02	(F)	(–)	
Albania	0 – 8	95–02	–	>80	
Armenia	50 – 250	97–02	0	0–19	
Austria	90 – 140	97–99	?	–	
Azerbaijan	200 – 600	96–02	(F)	(–)	
Belgium	10 – 35	95–00	0	0–19	1
Bulgaria	80 – 1,280	97–01	F	50–500	
Croatia	11 – 100	02	(F)	(–)	16,26
Cyprus	0 – 6	94–02	?	–	
Czech Rep.	0 – 10	90–00	0	0–19	
Denmark	23,000 – 27,000	99–00	+	>80	25,26
Faroe Is.	0 – 20	92	?	–	3
Estonia	200 – 500	98	F	20–29	1
Finland	300 – 1,000	99–01	+	100–200	
France	30 – 75	98–02	0	0–19	9
Georgia	350 – 350	02	?	–	1
Germany	12,000 – 20,000	95–00	F	30–49	
Greece	500 – 500	03	F	>80	
Hungary	0 – 8	97–01	F	>80	24
Iceland	830 – 1,200	90–00	0	0–19	57,49,50
Rep. Ireland	7,900 – 9,100	94–00	0	0–19	
Latvia	20 – 100	90–99	0	0–19	29
Lithuania	0 – 50	92–02	+	>80	
Macedonia	0 – 10	90–00	(F)	(20–29)	
Moldova	0 – 5	90–00	–	20–29	
Netherlands	1,600 – 1,600	99–01	0	0–19	3,4,8,9,11,12
Norway	4,700 – 4,800	93–96	(0)	(0–19)	68,70
Poland	2,000 – 4,000	92–00	+	>80	115,117
Romania	2,000 – 4,500	90–00	–	0–19	60,14
Serbia & MN	(1 – 5)	90–02	(F)	(50–79)	
Slovakia	0 – 10	90–99	?	–	4
Slovenia	Present	90–00	?	–	
Sweden	1,000 – 4,000	98–01	+	0–19	
Switzerland	11 – 54	98–02	F	50–79	
Turkey	(500 – 1,500)	91–01	F	>80	
Ukraine	1,000 – 5,000	90–95	F	20–29	
UK	6,900 – 6,900	94–99	+	23	48,49

Total (approx.)	>65,000	Overall trend	Large increase
% in European IBAs	>90	Gen. length 9	% Global pop. 50–74
		(See p. 52, top, for data quality graph)	

	Breeding pop. size (pairs)		
Total (approx.)	16,000 – 21,000	Overall trend	Large increase
Breeding range	>2,000,000 km ²	Gen. length. 9	% Global pop. 25–49