

# *Tachybaptus ruficollis*

## LITTLE GREBE

Non-SPEC (1994: —) Status Secure

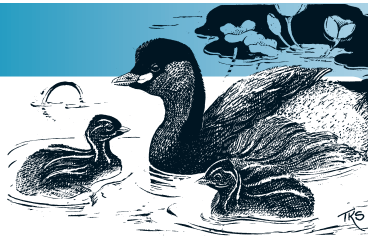
Criteria —

European IUCN Red List Category —

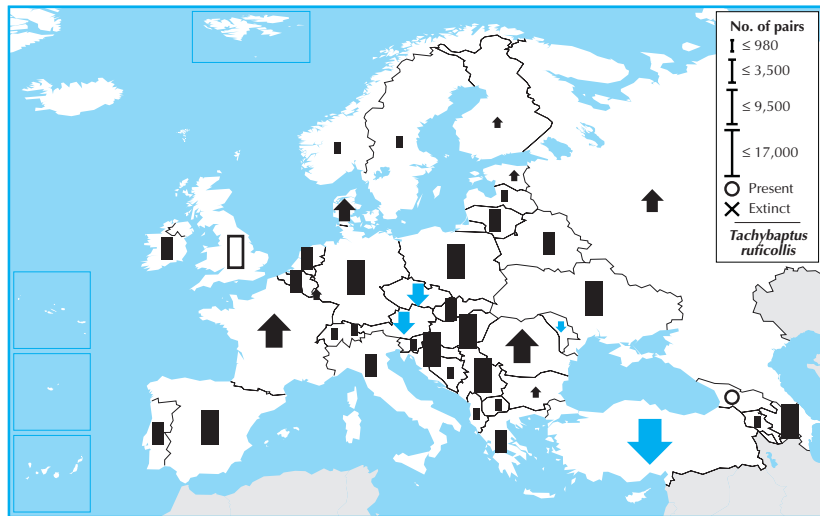
Criteria —

Global IUCN Red List Category —

Criteria —



*Tachybaptus ruficollis* is a widespread breeder across much of western and central Europe, which accounts for less than a quarter of its global breeding range. Its European breeding population is relatively large (>99,000 pairs), and was stable between 1970–1990. Although there were declines in a few countries—notably the sizeable Turkish population—during 1990–2000, populations in the vast majority of its European range were stable or increased, and the species remained stable overall. Consequently, it is evaluated as Secure.



Country	Breeding pop. size (pairs)	Year(s)	Trend	Mag.%	References
Albania	120 – 540	96-02	0	0-19	6
Armenia	<b>800 – 1,200</b>	98-02	0	<b>0-19</b>	<b>11</b>
Austria	1,200 – 2,000	98-02	–	30-49	
Azerbaijan	4,000 – 8,000	96-02	(0)	(0-19)	
Belarus	<b>2,000 – 2,400</b>	97-00	0	0-19	
Belgium	1,000 – 1,600	95-02	0	0-19	1
Bosnia & HG	(10 – 15)	90-00	(0)	(0-19)	
Bulgaria	<b>500 – 900</b>	95-00	+	>80	
Croatia	(6,000 – 7,000)	02	0	0-19	54
Cyprus	<b>80 – 160</b>	94-02	<b>0</b>	<b>0-19</b>	
Czech Rep.	<b>2,000 – 4,000</b>	00	–	<b>30-49</b>	
Denmark	2,000 – 3,000	00	(+)	(0-19)	3
Estonia	5 – 15	98	+	20-29	1
Finland	10 – 30	99-01	+	100	
France	4,000 – 8,000	98-02	+	0-9	4
Georgia	Present	03	?	–	
Germany	6,000 – 9,800	95-99	(0)	(0-19)	
Greece	(1,500 – 2,000)	95-00	(0)	(0-19)	
Hungary	(9,000 – 10,000)	90-93	0	0-19	14
Rep. Ireland	1,000 – 2,500	88-91	0	0-19	
Italy	3,000 – 4,000	03	0	0-19	6
Latvia	(300 – 800)	90-00	(0)	(0-19)	23,17
Liechtenstein	3 – 5	98-00	0	0-19	
Lithuania	(1,000 – 2,000)	99-01	(0)	(0-19)	20
Luxembourg	<b>60 – 75</b>	01-02	+	<b>30-49</b>	
Macedonia	(200 – 500)	99-00	(0)	(0-19)	
Moldova	50 – 100	90-00	–	30-49	
Netherlands	<b>1,800 – 2,500</b>	98-00	<b>F</b>	<b>40</b>	1
Norway	<b>23 – 37</b>	00	<b>0</b>	<b>0-19</b>	29
Poland	7,500 – 10,000	90-00	(0)	(0-19)	1
Portugal	(1,000 – 5,000)	02	(0)	(0-19)	
Romania	(7,000 – 12,000)	98-02	(+)	(0-19)	
Russia	(2,000 – 5,500)	90-00	+	20-29	8,66,178
Serbia & MN	6,000 – 9,000	90-02	0	0-19	203,29,155,156, 100,13,10,225,227
Slovakia	1,000 – 3,000	90-99	0	0-19	
Slovenia	600 – 1,000	94	(0)	(0-19)	
Spain	(5,200 – 8,000)	98-02	(F)	(–)	10
Sweden	300 – 400	99-00	F	20-29	
Switzerland	<b>600 – 800</b>	93-96	0	10-19	
Turkey	13,000 – 20,000	01	(–)	(0-19)	
Ukraine	3,500 – 6,900	90-00	F	20-29	
UK	3,800 – 13,000	00	?	–	5,31
<b>Total (approx.)</b>	<b>99,000 – 170,000</b>			<b>Overall trend</b> Stable	
<b>Breeding range</b>	<b>&gt;4,000,000 km<sup>2</sup></b>			<b>Gen. length. 4</b>	<b>% Global pop. 5-24</b> (See p. 31, bottom, for data quality graph)
<b>Winter pop. size (individuals)</b>					
<b>Total (approx.)</b>	<b>&gt;72,000</b>			<b>Overall trend</b> Small increase	
<b>% in European IBAs</b>	<b>12-25</b>			<b>Gen. length 4</b>	<b>% Global pop. 5-24</b>