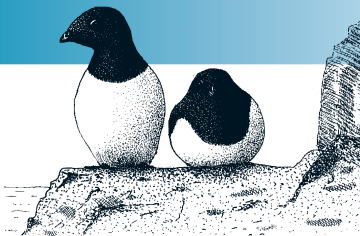


Alle alle

DOVEKIE



Non-SPEC (1994: —) Status (Secure)

Criteria —

European IUCN Red List Category —

Criteria —

Global IUCN Red List Category —

Criteria —

Alle alle breeds in Greenland, Svalbard, and on the Russian islands of the high Arctic, with Europe accounting for less than a quarter of its global breeding range. Its European breeding population is extremely large (>11,000,000 pairs), and was stable between 1970–1990. Although the tiny population off the coast of northern Iceland went extinct during 1990–2000, populations were stable in Svalbard and the Greenland stronghold, and the species probably remained stable overall. Consequently, it is provisionally evaluated as Secure.

Country	Breeding pop. size (pairs)	Year(s)	Trend	Mag. %	References
Denmark					
Greenland	(10,000,000 – 40,000,000)	90–00	(0)	(0–19)	6
Iceland	0 – 0	97	–	X	21
Norway					
Svalbard	(1,000,000 – 3,000,000)	94	(0)	(0–19)	
Russia	(100,000 – 500,000)	90–02	?	–	154,155
Total (approx.)	11,000,000 – 44,000,000	Overall trend Stable			
Breeding range	>250,000 km²	Gen. length. 16	% Global pop. 5–24		



2000 population

100

1990 population

100

Data quality (% – *Alle alle*)

□ unknown □ poor ■ medium ■ good

1990–2000 trend

99

1970–1990 trend

99