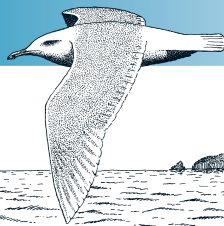


# *Larus hyperboreus*

## GLAUCOUS GULL



**Non-SPEC** (1994: —) **Status** (Secure)

**Criteria** —

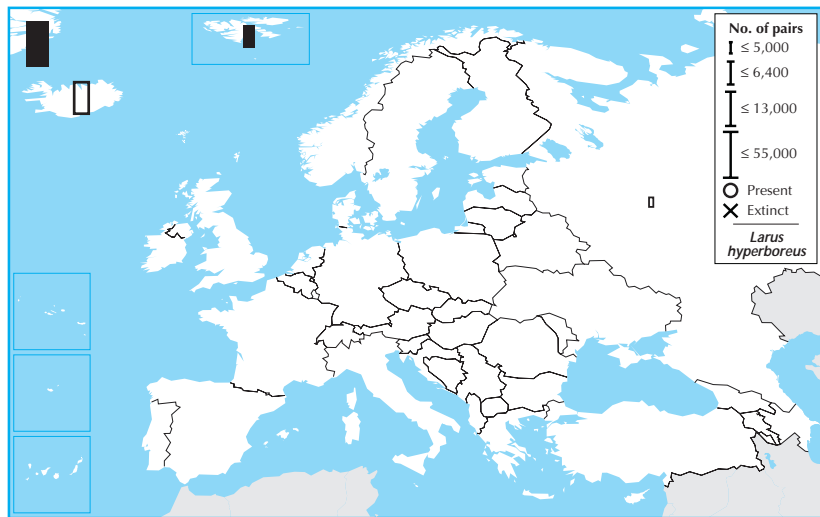
**European IUCN Red List Category** —

**Criteria** —

**Global IUCN Red List Category** —

**Criteria** —

*Larus hyperboreus* breeds in Greenland, Svalbard, Iceland and arctic Russia, with Europe accounting for less than a quarter of its global breeding range. Its European breeding population is relatively small (<140,000 pairs), but was stable between 1970–1990. Although the trends of the populations in Iceland and Russia during 1990–2000 were unknown, the species was stable in Svalbard and the stronghold Greenland, and hence probably remained stable overall. Consequently, it is provisionally evaluated as Secure.



Country	Breeding pop. size (pairs)	Year(s)	Trend	Mag.%	References
Denmark					
Greenland	(30,000 – 100,000)	90–00	(0)	(0–19)	5
Iceland	(10,000 – 15,000)	97	?	–	16
Norway					
Svalbard	(4,000 – 10,000)	70–96	(0)	(0–19)	
Russia	(2,500 – 10,000)	90–00	?	–	81,154,155
<b>Total (approx.)</b>	<b>47,000 – 140,000</b>		<b>Overall trend</b>	<b>Stable</b>	
<b>Breeding range</b>	<b>&gt;500,000 km<sup>2</sup></b>		<b>Gen. length</b>	<b>13</b>	<b>% Global pop.</b> 5–24
Country	Winter pop. size (individuals)	Year(s)	Trend	Mag.%	References
Denmark					
Faroe Is.	30 – 200	92	?	–	3
Greenland	(300,000 – 500,000)	90–00	(0)	(0–19)	
Estonia	0 – 5	98	(+)	(N)	1
France	20 – 80	98–02	?	–	9
Germany	0 – 50	95–00	?	–	
Iceland	(30,000 – 50,000)	78–94	?	–	48
Latvia	0 – 10	90–01	(0)	(0–19)	32
Netherlands	2 – 2	99–01	?	–	3,4,8,9,11,12
Poland	5 – 30	90–00	F	>80	123
Romania	0 – 1	90–00	?	–	
<b>Total (approx.)</b>	<b>&gt;330,000</b>		<b>Overall trend</b>	<b>Unknown</b>	
<b>% in European IBAs</b>	<b>Unknown</b>		<b>Gen. length</b>	<b>13</b>	<b>% Global pop.</b> 25–49

2000 population

100

1990 population

60

40

Data quality (%) - *Larus hyperboreus*

□ unknown □ poor □ medium ■ good

1990–2000 trend

22

78

1970–1990 trend

60

7

10

23