

# *Phalaropus fulicarius*

## GREY PHALAROPE

**Non-SPEC** (1994: —) **Status** Secure

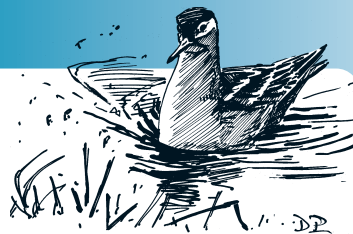
**Criteria** —

**European IUCN Red List Category** —▼▼

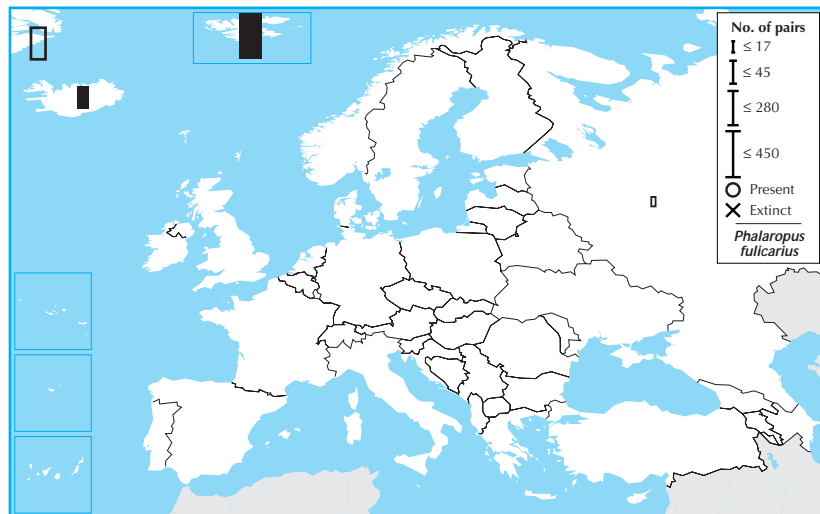
**Criteria** —

**Global IUCN Red List Category** —

**Criteria** —



*Phalaropus fulicarius* is a summer visitor to the European Arctic, which accounts for a tiny proportion of its global breeding range. Its European breeding population is very small (as few as 390 pairs), but was stable between 1970–1990. The key Svalbard population remained stable during 1990–2000, and the species was probably stable overall. Although the size of the European population could render it susceptible to the risks affecting small populations, it is marginal to a much larger non-European population. Consequently, the species is provisionally evaluated as Secure.



Country	Breeding pop. size (pairs)	Year(s)	Trend	Mag. %	References
Denmark					
Greenland	(150 – 500)	90–00	?	–	
Iceland	<b>40 – 50</b>	87–97	(F)	(–)	21,41
Norway					
Svalbard	200 – 1,000	95	(0)	(0–19)	
Russia	(2 – 150)	90–02	?	–	
<b>Total (approx.)</b>	<b>390 – 1,700</b>	<b>Overall trend Stable</b>			
<b>Breeding range</b>	<b>&gt;100,000 km<sup>2</sup></b>	<b>Gen. length. &lt;3.3 % Global pop. &lt;5</b>			

2000 population

37	57	6
----	----	---

1990 population

97			3
----	--	--	---

1990–2000 trend

37	63	
----	----	--

1970–1990 trend

97			3
----	--	--	---

Data quality (%) - *Phalaropus fulicarius*

□ unknown □ poor □ medium ■ good