

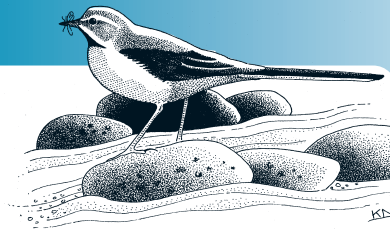
Motacilla cinerea

GREY WAGTAIL

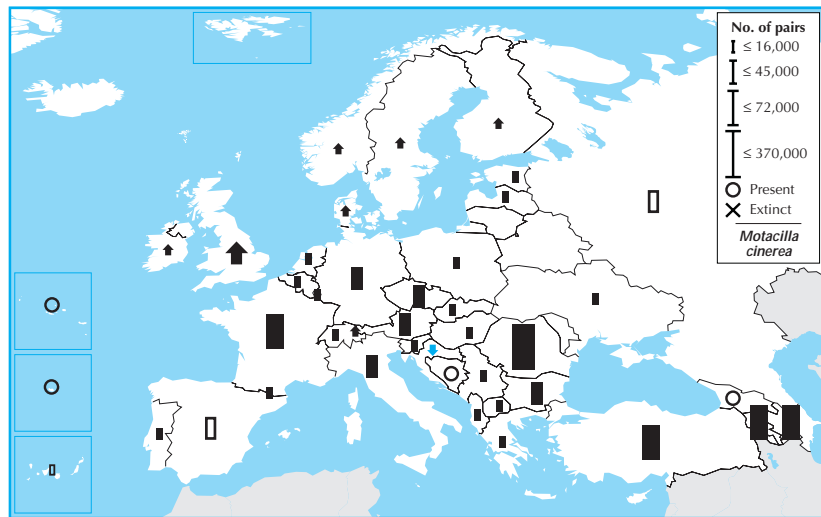
Non-SPEC (1994: —) Status Secure
Criteria —

European IUCN Red List Category —
Criteria —

Global IUCN Red List Category —
Criteria —



Motacilla cinerea has a discontinuous breeding distribution in western and southern Europe, the Caucasus and the western Urals, with Europe accounting for less than a quarter of its global breeding range. Its European breeding population is large (>740,000 pairs), and was stable between 1970–1990. The species remained stable overall during 1990–2000, with the vast majority of national populations stable or increasing—including the key one in Romania. Consequently, it is evaluated as Secure.



Country	Breeding pop. size (pairs)	Year(s)	Trend	Mag.%	References
Albania	800 – 1,600	96–02	(0)	(0–19)	
Andorra	70 – 100	99–01	(0)	(0–19)	1,3
Armenia	30,000 – 170,000	99–02	0	0–19	
Austria	25,000 – 50,000	98–02	(0)	(0–19)	
Azerbaijan	(20,000 – 200,000)	96–00	(0)	(0–19)	
Belgium	5,100 – 8,300	01–02	0	0–19	1
Bosnia & HG	Present	90–03	?	–	
Bulgaria	20,000 – 30,000	96–02	0	0–9	
Croatia	(5,000 – 10,000)	02	(–)	(30–49)	16
Czech Rep.	20,000 – 40,000	00	0	0–19	
Denmark	(450 – 500)	93–96	(+)	(30–49)	3
Estonia	0 – 5	98	0	0–19	1
Finland	10 – 30	98–02	+	300	
France	(40,000 – 120,000)	98–02	(0)	(0–19)	4
Georgia	Present	03	?	–	
Germany	27,000 – 43,000	95–99	0	0–19	
Greece	(5,000 – 10,000)	95–00	(0)	(0–19)	
Hungary	190 – 300	95–02	0	0–19	
Rep. Ireland	10,000 – 20,000	88–91	+	0–19	
Italy	(20,000 – 50,000)	03	(0)	(0–19)	
Latvia	(1 – 10)	90–00	(0)	(0–19)	17
Liechtenstein	50 – 80	98–00	+	0–19	
Luxembourg	300 – 400	02	0	0–19	
Macedonia	(3,000 – 5,000)	90–00	(0)	(0–19)	
Netherlands	240 – 300	98–00	0	0–19	1
Norway	600 – 1,500	90–02	+	0–19	27
Poland	2,000 – 4,000	90–00	0	0–19	27
Portugal	(5,000 – 50,000)	02	(0)	(0–19)	
Azores	Present	02	?	–	
Madeira	Present	02	?	–	
Romania	340,000 – 385,000	00–02	0	0–19	
Russia	(30,000 – 55,000)	90–00	?	–	51,52,118
Serbia & MN	8,000 – 12,000	90–02	0	0–19	1,155,172a,91,43,152
Slovakia	10,000 – 20,000	90–99	0	0–19	
Slovenia	3,000 – 6,000	00	(0)	(0–19)	
Spain	(20,000 – 100,000)	98–02	?	–	10
Canary Is.	(2,500 – 10,000)	97–03	?	–	28,25
Sweden	500 – 2,000	99–00	+	50–79	
Switzerland	8,000 – 11,000	93–96	0	0–19	
Turkey	(30,000 – 120,000)	01	(0)	(0–19)	
Ukraine	9,000 – 13,000	90–00	0	0–19	
UK	38,400 – 46,200	00	+	0–19	5,31

Total (approx.) Breeding range 740,000 – 1,600,000 >4,000,000 km²

Overall trend Stable
Gen. length. <3.3 % Global pop. 5–24
(See p. 195, top, for data quality graph)