

Passer hispaniolensis

SPANISH SPARROW

Non-SPEC (1994: —) **Status** (Secure)

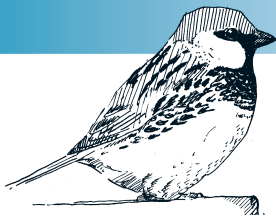
Criteria —

European IUCN Red List Category —

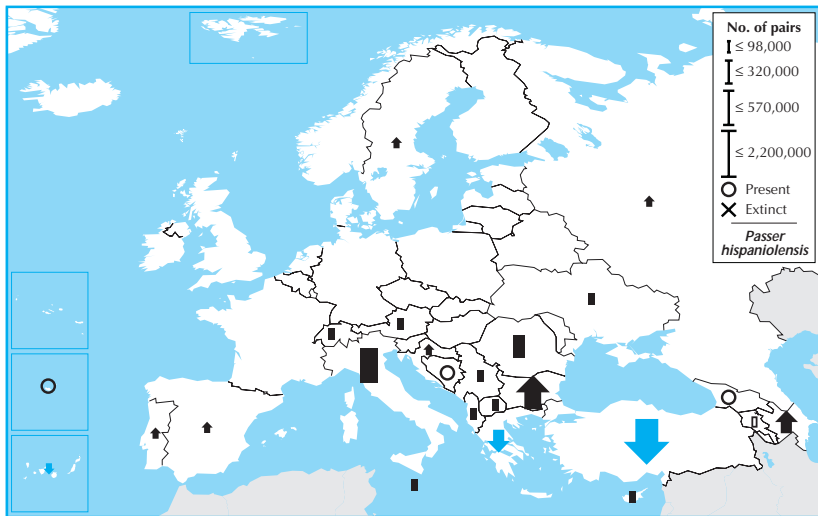
Criteria —

Global IUCN Red List Category —

Criteria —



Passer hispaniolensis is a widespread breeder in parts of southern Europe, which accounts for less than half of its global range. Its European breeding population is very large (>2,800,000 pairs), and increased between 1970–1990. Although there were slight declines in Greece and Turkey during 1990–2000, populations across most of Europe—including sizeable ones in Italy and Bulgaria—were stable or increased, and the species was probably stable overall. Consequently, it is provisionally evaluated as Secure.



Country	Breeding pop. size (pairs)	Year(s)	Trend	Mag. %	References
Albania	5,000 – 20,000	02	(0)	(0–19)	
Armenia	80 – 300	95–02	?	–	
Austria	(10 – 30)	98–02	(0)	(0–19)	
Azerbaijan	(100,000 – 500,000)	96–00	(+)	(30–49)	
Bosnia & HG	Present	90–03	?	–	
Bulgaria	400,000 – 800,000	96–02	+	0–19	
Croatia	(10,000 – 50,000)	02	(+)	(>80)	16
Cyprus	(60,000 – 160,000)	94–02	(0)	(0–19)	
Georgia	Present	03	?	–	
Greece	(200,000 – 500,000)	95–00	(–)	(0–19)	
Italy	(300,000 – 500,000)	03	(0)	(0–19)	
Macedonia	(10,000 – 20,000)	90–00	(0)	(0–19)	
Malta	(60,000 – 100,000)	90–02	0	0–19	1
Portugal	(10,000 – 100,000)	02	(+)	(–)	
Madeira	Present	02	?	–	
Romania	(125,000 – 254,000)	00–02	(0)	(0–19)	48
Russia	(2,000 – 5,000)	90–00	(+)	(20–29)	8
Serbia & MN	2,000 – 3,000	95–02	F	20–49	1,155,141,227,117
Spain	(20,000 – 100,000)	92	(+)	(0–19)	13,12,10
Canary Is.	(20,000 – 100,000)	97–03	(–)	(0–19)	28,25
Switzerland	(10,000 – 25,000)	98–02	(0)	(0–19)	
Turkey	(1,500,000 – 3,000,000)	01	(–)	(0–19)	
Ukraine	50 – 100	90–00	F	>80	

Total (approx.) Breeding range 2,800,000 – 6,200,000 >1,000,000 km²

Overall trend Stable
Gen. length. <3.3 % **Global pop.** 25–49

2000 population	86	14	
1990 population	65	34	
Data quality (%) – <i>Passer hispaniolensis</i>			
□ unknown □ poor ■ medium ■ good			
1990–2000 trend	84	14	
1970–1990 trend	15	35	49

2000 population	46	50	4	
1990 population	3	58	39	
Data quality (%) – <i>Passer domesticus</i> (see p. 263, top)				
□ unknown □ poor ■ medium ■ good				
1990–2000 trend	27	38	29	6
1970–1990 trend	6	57	26	11