

# *Oceanodroma leucorhoa*

## LEACH'S STORM-PETREL

**SPEC 3** (1994: 3) **Status** (Localised)

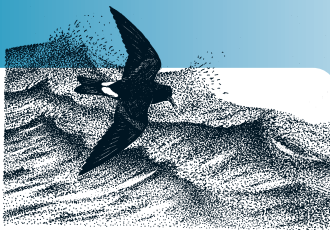
**Criteria**  $\geq 90\%$  breed at  $\leq 10$  sites

**European IUCN Red List Category** —

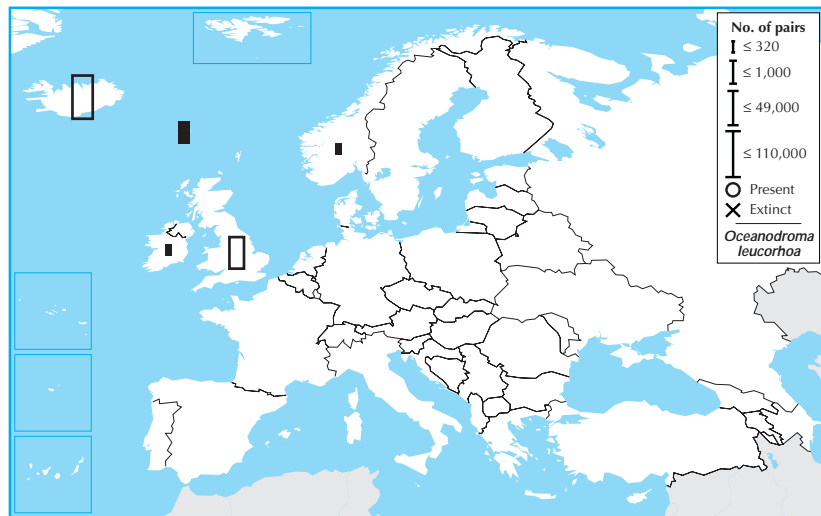
**Criteria** —

**Global IUCN Red List Category** —

**Criteria** —



*Oceanodroma leucorhoa* breeds on remote islands in north-western Europe, which accounts for less than a quarter of its global breeding range. Its European breeding population is large ( $>120,000$  pairs), and was stable between 1970–1990. Although trends were not available for key populations in Iceland and the United Kingdom during 1990–2000, there was no evidence to suggest that the species declined. Nevertheless, more than 90% of the European breeding population occurs at 10 sites (see Appendix 5), and consequently the species is provisionally evaluated as Localised.

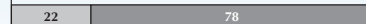


Country	Breeding pop. size (pairs)	Year(s)	Trend	Mag. %	References
Denmark					
Faroe Is.	1,000 – 1,000	95	(0)	(0–19)	
Iceland	80,000 – 150,000	91	?	–	20
Rep. Ireland	<b>310 – 310</b>	99–02	(0)	(0–19)	
Norway	(100 – 1,000)	90–02	(0)	(0–19)	4
UK	<b>36,400 – 64,900</b>	99–01	?	–	20
<b>Total (approx.)</b>	<b>120,000 – 220,000</b>		<b>Overall trend</b>	<b>Unknown</b>	
<b>Breeding range</b>	<b><math>&gt;20,000</math> km<sup>2</sup></b>		<b>Gen. length</b>	<b>9</b>	<b>% Global pop. 5–24</b>

2000 population



1990 population



Data quality (%) – *Oceanodroma leucorhoa*

□ unknown □ poor ■ medium ■ good

1990–2000 trend



1970–1990 trend

