

Milvus migrans

BLACK KITE

SPEC 3 (1994: 3) **Status** (Vulnerable)

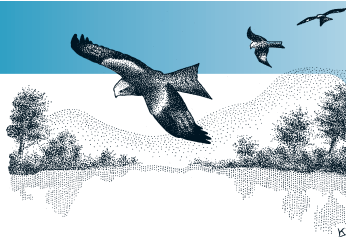
Criteria See IUCN below

European IUCN Red List Category VU

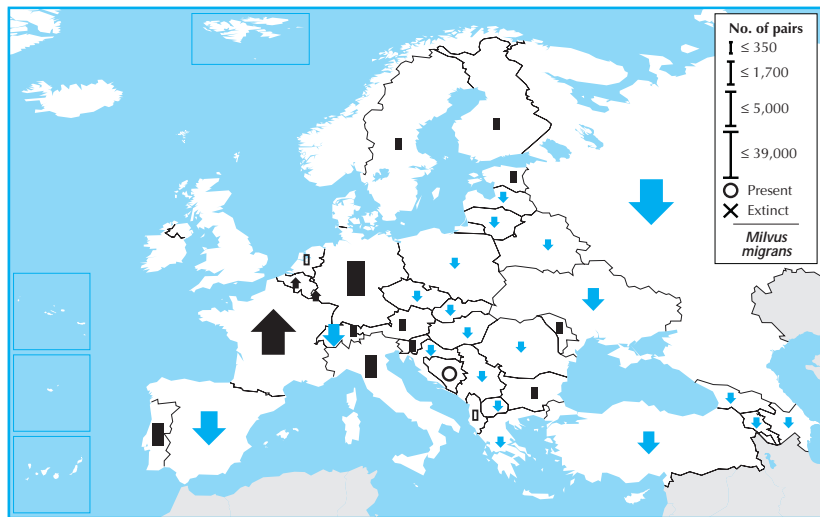
Criteria A2b

Global IUCN Red List Category —

Criteria —



Milvus migrans is a widespread summer visitor to much of Europe, which accounts for less than a quarter of its global breeding range. Its European breeding population is relatively small (<100,000 pairs), and declined substantially between 1970–1990. Although some populations—notably the French one—were stable or increased during 1990–2000, the species declined across much of Europe, and declined overall at a rate that—on top of earlier declines—equates to a large decline (>30%) over three generations. Consequently, it is provisionally evaluated as Vulnerable.



Country	Breeding pop. size (pairs)	Year(s)	Trend	Mag. %	References
Albania	(0 – 5)	96–02	?	–	
Armenia	20 – 80	97–02	–	30–49	
Austria	50 – 100	98–02	0	0–19	
Azerbaijan	(100 – 500)	96–00	(–)	(20–29)	
Belarus	190 – 220	97–02	–	0–9	
Belgium	18 – 28	95–02	+	50–79	1
Bosnia & HG	Present	85–89	?	–	
Bulgaria	80 – 140	96–02	0	0–19	
Croatia	(100 – 500)	02	(–)	(0–19)	16
Czech Rep.	40 – 60	00	–	30–49	
Estonia	1 – 5	98	0	0–19	1
Finland	(10 – 15)	98–02	(0)	(0–19)	
France	22,500 – 26,300	00–02	+	10–19	8,7
Georgia	200 – 400	94–03	(–)	(0–19)	
Germany	2,700 – 4,100	95–99	0	0–19	
Greece	5 – 20	95–00	(–)	(0–19)	
Hungary	90 – 120	97–02	–	50–79	1
Italy	700 – 1,200	03	0	0–19	6
Latvia	(10 – 30)	90–00	(–)	(20–29)	18
Liechtenstein	3 – 4	98–00	0	0–19	
Lithuania	50 – 80	99–01	–	30–49	20
Luxembourg	35 – 45	00–02	+	10–19	
Macedonia	10 – 25	99–00	(–)	(20–29)	3
Moldova	35 – 60	90–00	0	0–19	
Netherlands	0 – 1	98–00	?	–	1
Poland	300 – 400	98	(–)	(20–29)	33
Portugal	(800 – 1,600)	02	(0)	(0–19)	
Romania	120 – 160	00–02	(–)	(0–19)	62
Russia	30,000 – 50,000	94–02	–	20–29	12,22,23,33,43, 104,114
Serbia & MN	50 – 70	97–02	–	0–19	1,170,155
Slovakia	40 – 60	80–99	–	50–79	
Slovenia	1 – 3	90–00	0	0–19	
Spain	(2,500 – 10,000)	98–02	(–)	(0–19)	10,16
Sweden	0 – 2	99–00	0	0–19	
Switzerland	1,200 – 1,500	93–96	(–)	(0–19)	
Turkey	(1,000 – 1,500)	01	–	20–29	
Ukraine	1,500 – 1,800	90–00	–	30–49	

Total (approx.)	64,000 – 100,000	Overall trend Large decline
Breeding range	>5,000,000 km ²	Gen. length 6 % Global pop. 5–24

2000 population	10	87	3	
1990 population		89	9	
Data quality (%) – <i>Milvus migrans</i>				
	□ unknown	□ poor	□ medium	■ good
1990–2000 trend	11	89		
1970–1990 trend		97		